



Wireless N PCI Adapter

User Manual

Model: N01-P15GB

A. Install the driver

1. Insert the Resource CD into your CD-ROM drive, and open the folder with the same name as your product. Then double-click



Setup.exe in the proper folder according to your Operating System to start the installation, Figure 1 will appear.

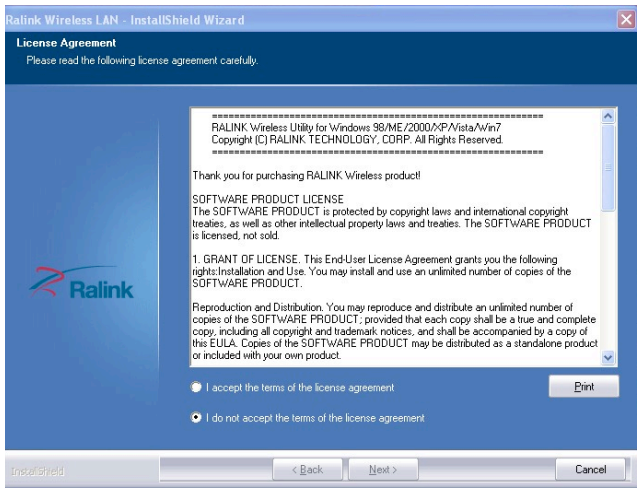

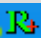


Figure 1

2. Follow the step-by-step instructions following in the continued prompted screens to complete Install Shield Wizard steps.




Note:


1) If Windows XP warns about Windows Logo testing, click Continue Anyway to continue the installation.

2) After the Installation,  or  will appear in the lower right corner of the screen in your system tray.

Otherwise, maybe there are some problems with the installation, please check it carefully.

B. Configure wireless connection in Windows XP with Ralink Wireless Client Utility.

The adapter's tray icon  shows the signal strength using color and the RSSI (received signal strength indication). If the icon  is green, a wireless connection has been established. If the icon  is black, there is no connection. Follow the steps below to launch a wireless connection manually.

1. Open the Ralink Utility by double-clicking on the Ralink Utility icon  in the taskbar in the bottom right corner of your screen, or by clicking **Start > All Programs > Ralink Wireless > Ralink Wireless Utility**, click below file:

2. The Ralink Wireless Utility appears, by default connected to an available open wireless network. Check the name of the network to which you are connected. If this is the correct network, no further steps are required.

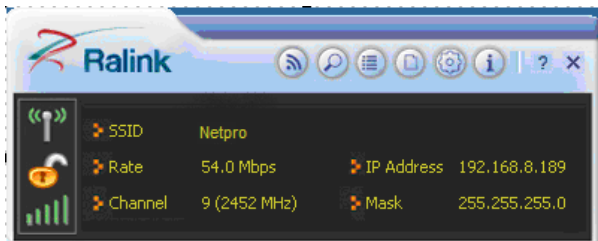


Figure 2

3. To connect to an alternative network, click the Available Networks button.

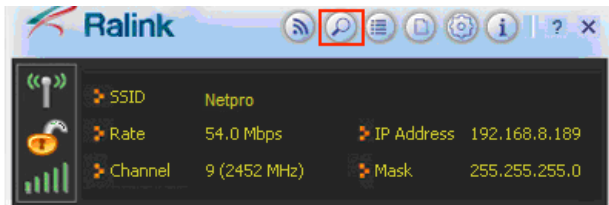


Figure 3

4. In the Available Networks window that appears, select the name of

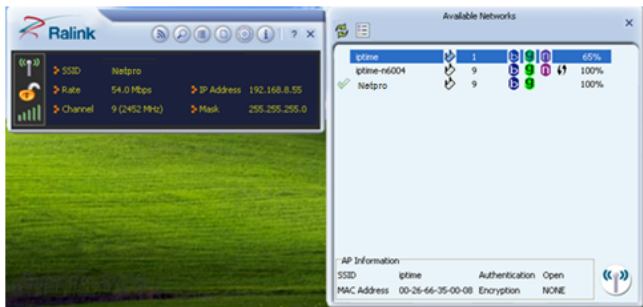



Figure 4

The Ralink Wireless Utility automatically detects and displays the security settings of the network to which you are connecting in the Profile Settings screens. Here, the Netpro network is open, so no information shows up.

5. If the AP is encrypted, take WEP encryption for example, click the right arrow  and type the same WEP key as that configured on the AP or wireless router to which you are connecting, and ensure that "Default Key" and "Key Format" settings are also the same. Click the right arrow to save your settings and connect to the network.

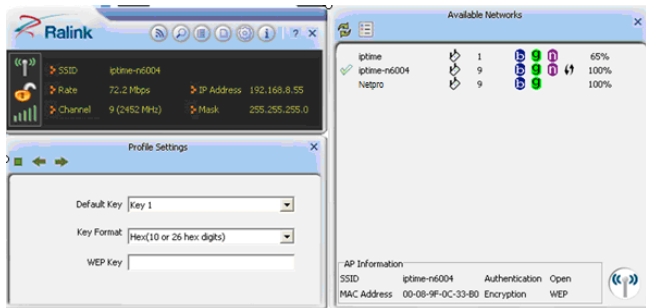


Figure 5

C. Configure wireless connection in Windows XP with Windows XP Wireless Zero Configuration

1. Right-click **My Computer** > **Manage**, then you will see window below (Figure 6).

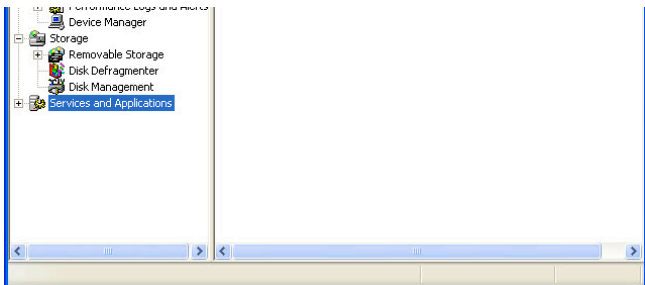


Figure 6

2. Click **Services and Applications** and double click **Services**, then you will see the Wireless Zero Configuration (Figure 7)

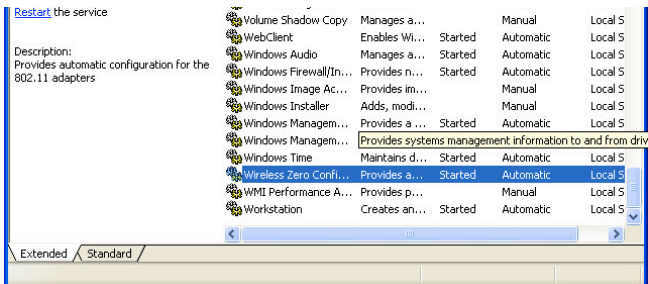


Figure 7

3. Double click **Wireless Zero Configuration**, then you will see the pop-up window below (Figure 8), and then click **Start > OK**

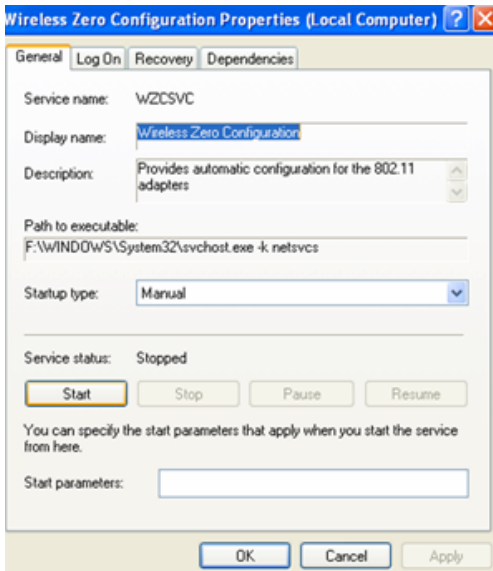



Figure 8

4. Right-click the icon , and then select **View Available Wireless Networks** (Figure 9).

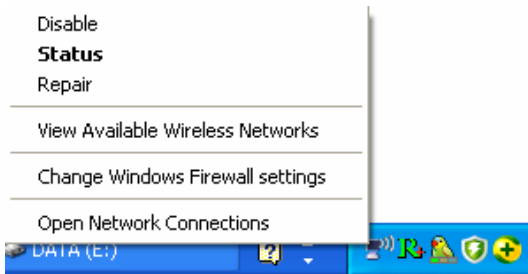


Figure 9

5. Then, Figure 10 will appear with many available wireless network in range. You can choose one and double click to connect the network.

Note: If you have not installed SP2 for Windows XP, the screens below will not be available.

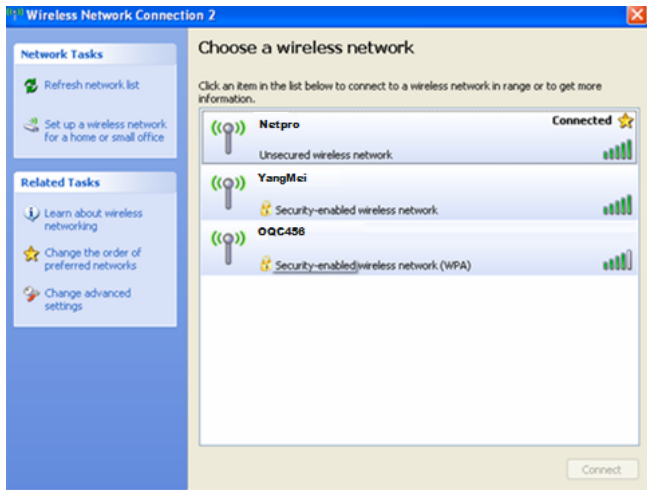


Figure 10

6. If the connection is finished, the icon will display like the next screen shown. (Figure 11)

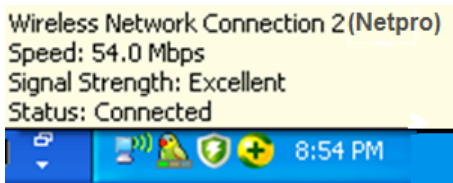


Figure 11


For more detailed instructions, please refer to the Ralink Wireless Utility Help, click the icon  (Figure 12)



Figure 12

Note: If a well-balanced wireless network cannot be created, please refer to this user guide or ask your dealer for help.

7. Warranty

NETPRO provides a limited 1 year warranty to all NETPRO products purchased. The warranty covers the main device, with failures due to defects in material or workmanship. Packaging, various cables, software products, technical data and other accessories are not covered here. The maximum liability of NETPRO is equal to or no higher than the product's purchased price.