



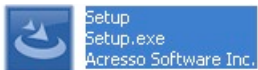
# **Wireless N USB Adapter**

## **User Manual**

**Model: N00-U30JM**

## A. Install the driver

1. Insert the Resource CD into your CD-ROM drive, and open the folder with the same name as your product. Then double-click Setup.exe



in the proper folder according to your Operating System to start the installation, Figure 1 will appear.

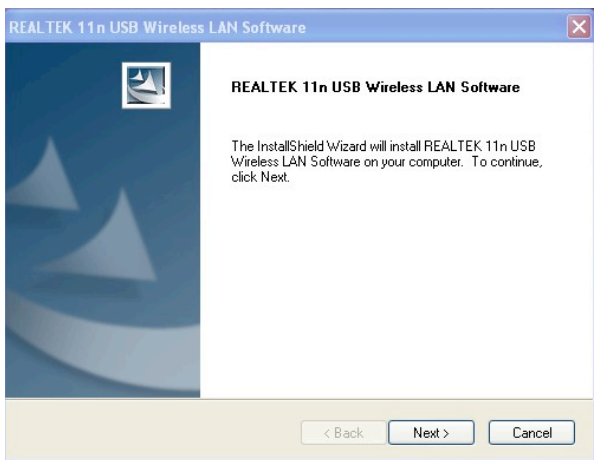




Figure 1

2. Follow the step-by-step instructions following in the continued prompted screens to complete Install Shield Wizard steps.


**Note:**

1) If Windows XP warns about Windows Logo testing, click Continue Anyway to continue the installation.


2) After the Installation,  or  will appear in the lower right corner of the screen in your system tray.

Otherwise, maybe there are some problems with the installation, please check it carefully.

**B. Configure wireless connection in Windows XP with Realtek Wireless Client Utility.**

The adapter's tray icon  shows the signal strength using color and the

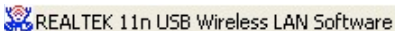
RSSI (received signal strength indication). If the icon is green , a

wireless connection has been established. If the icon  is red, there is no connection. Follow the steps below to launch a wireless connection manually.

1. Open the Realtek Utility by double-clicking on the Realtek Utility icon



in the task bar in the bottom right corner of your screen, or by clicking **Start > All Programs > REALTEK 11n USB Wireless LAN Utility**, click below file:



2. The Realtek Utility appears, by default connected to an available open wireless network. Check the name of the network to which you are connected. If this is the correct network, no further steps are required.

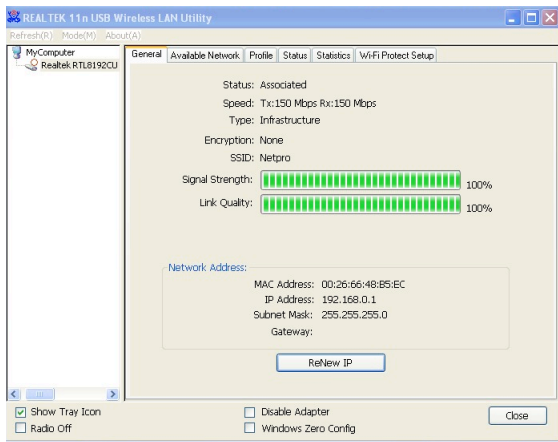


Figure 2

3. To connect to an alternative network, click the Available Networks

label.

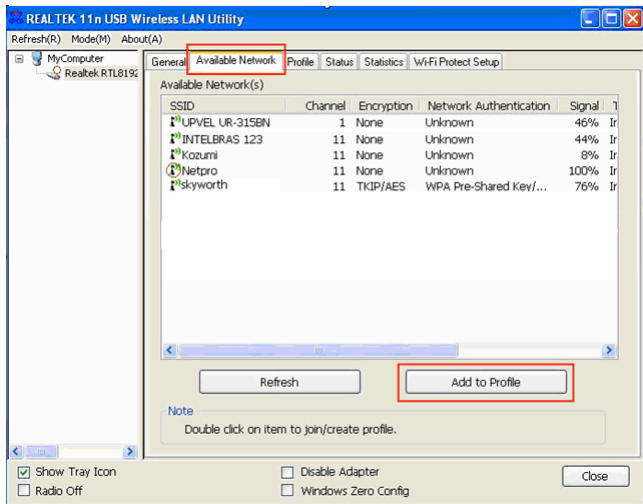


Figure 3

4. In the Available Networks window that appears, select the name of the network to which you are connecting. Then click **Add to Profile** button, it will show you below window:

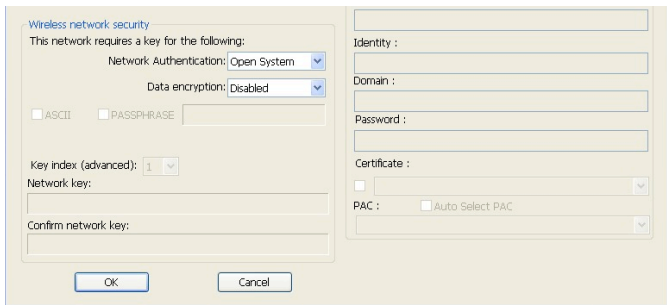


Figure 4

The Realtek Utility automatically turns to a page that displays the security settings of the network. Here, the Netpro network is open, so no information shows up. Click **Ok**.

5. If the AP is encrypted, take WEP encryption for example, you're required to enter the network key on this page. For example, you want to connect to RT3352\_AP which uses WEP encryption:

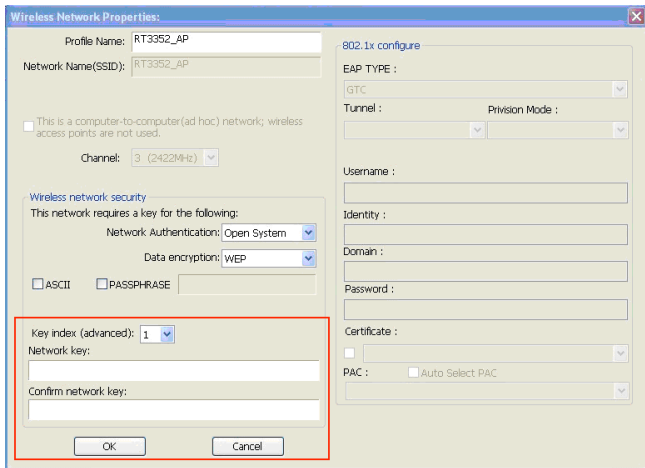


Figure 5

After finishing the right Network key, click Ok to connect to it.

### C. Configure wireless connection in Windows XP with Windows XP Wireless Zero Configuration

1. Right-click **My Computer** > **Manage**, then you will see window below (Figure 6).

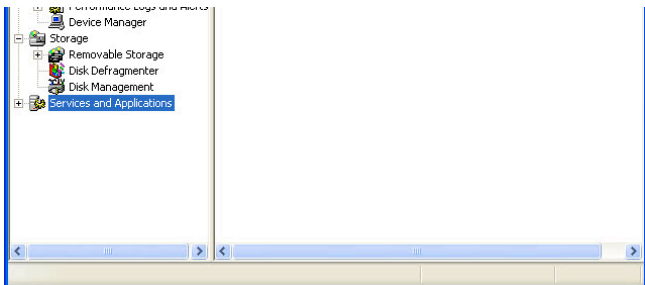


Figure 6

2. Click **Services and Applications** and double click **Services**, then you will see the Wireless Zero Configuration (Figure 7)



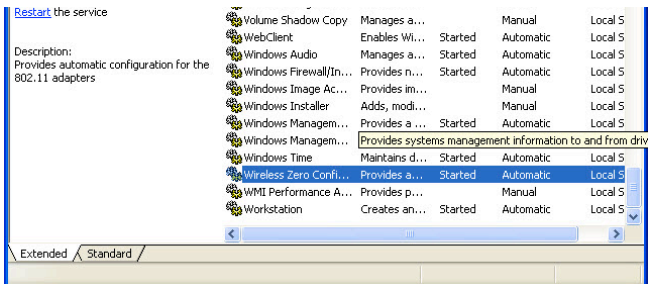


Figure 7

3. Double click **Wireless Zero Configuration**, then you will see the pop-up window below (Figure 8), and then click **Start > OK**

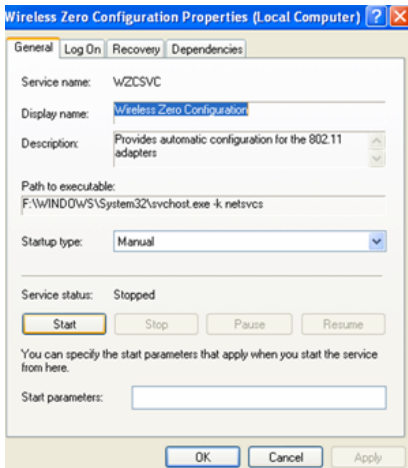
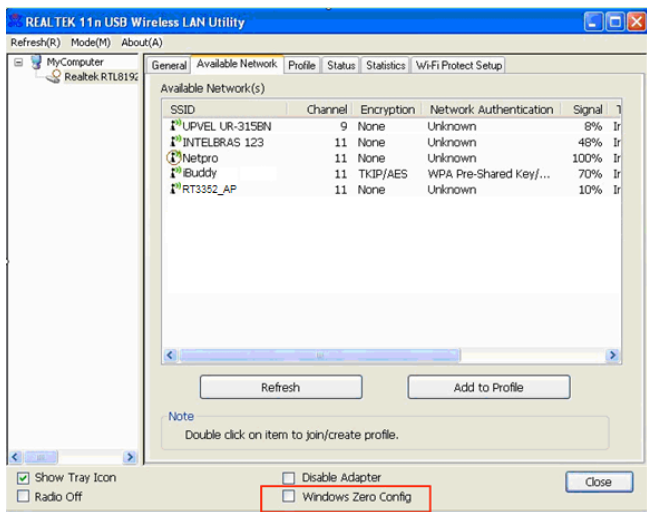



Figure 8

4. Check the box before Windows Zero Config, see below:



5. Right-click the icon , and then select **View Available Wireless Networks** (Figure 9).

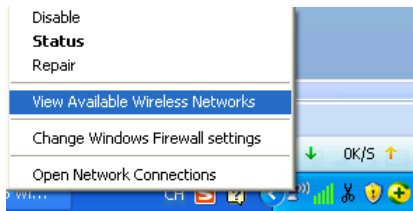


Figure 9

6. Then, Figure 10 will appear with many available wireless networks in range. You can choose one and double click to connect the network.

**Note:** If you have not installed SP2 for Windows XP, the screens below will not be available.

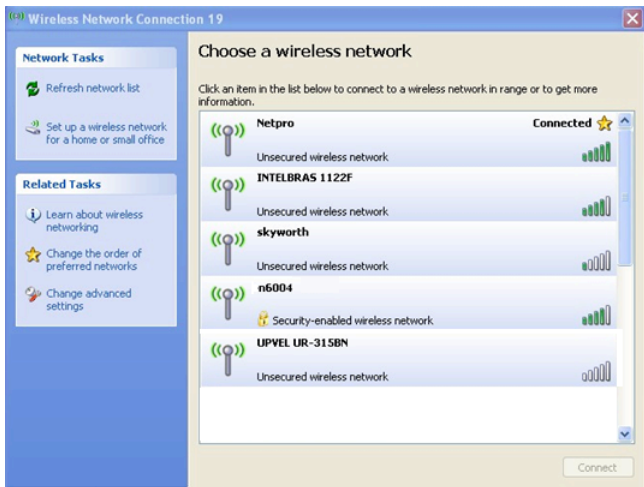


Figure 10

7. If the connection is finished, the icon will display like the next screen shown. (Figure 11)

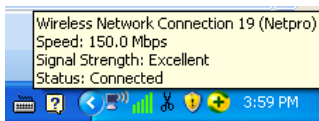


Figure 11

**Note:** If a well-balanced wireless network cannot be created, please Refer to this User Guide or ask your dealer for help.

## 8. Warranty

NETPRO provides a limited 1 year warranty to all NETPRO products purchased. The warranty covers the main device, with failures due to defects in material or workmanship. Packaging, various cables, software products, technical data and other accessories are not covered here. The maximum liability of NETPRO is equal to or no higher than the product's purchased price.